

迭部铁线莲,甘肃毛茛科一新种

王文采

(中国科学院植物研究所系统与进化植物学国家重点实验室,北京 100093)

摘要 描述了自甘肃发现的毛茛科铁线莲属长瓣铁线莲组一新种,迭部铁线莲。并给出此种与其近缘种和相似种之间的形态区别特征。

关键词 毛茛科;铁线莲属;新种;甘肃

中图分类号: Q949.746.5 文献标志码: A doi: 10.7525/j.issn.1673-5102.2015.01.001

Clematis diebuensis, a new species of Ranunculaceae from Gansu

WANG Wen-Tsai

(State Key Laboratory of Systematic and Evolutionary Botany, Institute of Botany, Chinese Academy of Sciences, Beijing 100093)

Abstract A species of the genus *Clematis* sect. *Atragene* (Ranunculaceae), *C. diebuensis*, is described as new from Gansu Province. The morphological differences between it and its ally and a similar species are given.

Key words Ranunculaceae; *Clematis*; new species; Gansu

迭部铁线莲 图 1

Clematis diebuensis W. T. Wang, sp. nov.

Fig. 1.

(Sect. *Atragene* (L.) DC. ser. *Occidentales*)

W. J. Yang & L. Q. Li

Ob staminodia linearia uninervia apice antheris sterilibus saepe praedita species nova haec est affinis *C. columbianae* (Nutt.) Torrey & Gray Americae Borealis, quae lianis ligneis, foliis biternatis, sepalis violaceo-caeruleis differt. Ob sepala flava ea est aliquanto similis *C. alpinae* (L.) Mill. ssp. *sibiricae* (Mill.) Kuntze, quae lianis ligneis, foliis biternatis, foliolis majoribus 3–6 cm longis apice acuminatis vel longe acuminatis, staminodiis spatulatis antheris sterilibus carentibus recedit. Ob folia ternata, foliola 3-partita vel 3-secta, sepala longe ovata et staminodia sublinearia ea est etiam simillima *C. sibiricae* (L.) Mill. var. *tianzhuensi* M. S. Yan & K. Sun, quae foliolorum segmentis apice plerumque acuminatis, filamentis anguste lineari-lanceolatis apice subfiliformi-

bus, staminodiis inferne ad basin sensim angustatis distinguitur (ex figura).

Suffruticose vine. Annual branches herbaceous, ca. 2 mm across, glabrous, longitudinally 4-angulate; bud scales ovate, 3–4 mm long, 2 mm broad, glabrous or near apex densely villous. Leaves ca. 3 together with 1–2 flowers arising from an axillary bud, ternate, petiolate; leaflets thinly papery, deltoid-ovate in outline, 1–2.2 cm long, 1.7–3.2 cm broad, at base subcordate, 3-sect to base or to 1–2 mm above base, segments on both surfaces sparsely appressed-puberulous or abaxially subglabrous, central segment oblong-elliptic or narrowly elliptic-obovate, 1–2.2 cm long, 5–9 mm broad, at apex acute, at base broadly cuneate, at margin denticulate or serrulate, sometimes subentire, lateral segments smaller, obliquely and narrowly ovate, 0.8–1.8 cm long, 3.5–7 mm broad; petioles slender, 2–3.2 cm long, with petiolules puberulous. Pedicel slender, 3.2–5.5 cm long, above spreading-puberulous. Calyx broadly campanulate, 2.2–2.5 cm in diam.;

第一作者简介:王文采(1926—)男,研究员,中国科学院院士,从事有花植物分类学研究。

收稿日期:2014-05-23

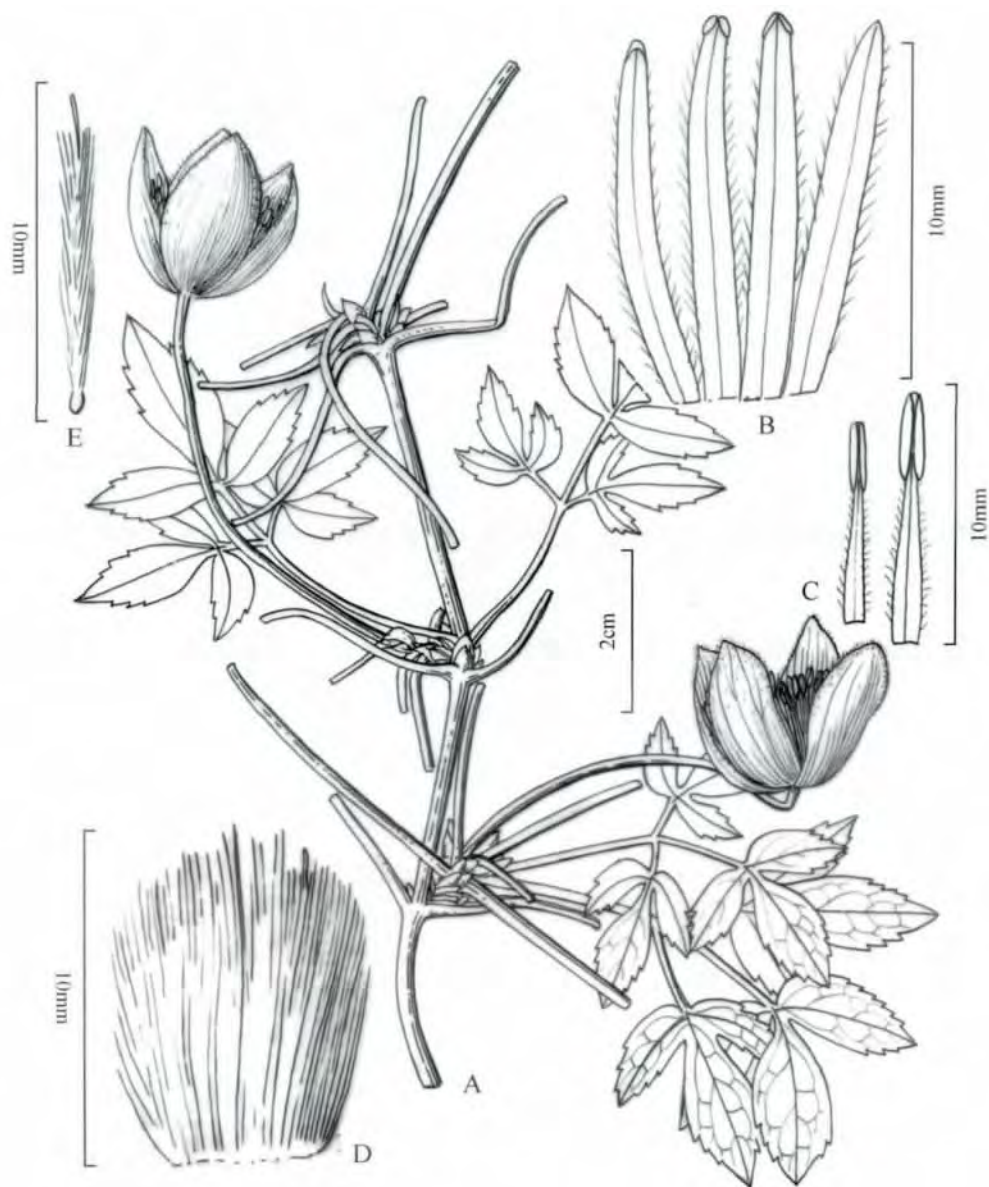


图1 迭部铁线莲 A. 开花茎(部分); B. 4枚退化雄蕊; C. 2枚雄蕊; D. 雌蕊群; E. 心皮

Fig.1 *C. diebuensis* A. Part of flowering stem; B. 4 staminodes; C. 2 stamens; D. Gynoecium; E. Carpel

sepals 4, yellow tinged with greenish, suberect, ovate-oblong or long ovate, 1.8–2.5 cm long, 0.6–1.1 cm broad, at apex slightly acute, trinerved, abaxially puberulous, on margin densely puberulous, adaxially sparsely puberulous. Staminodes ca. 16, linear, ca. 1.2 cm long, 0.9–1.5 mm broad, sericeous-ciliate, lacking steriles anthers or at apex with sterile anthers 0.6–1 mm long. Stamens ca. 20; filaments linear-lanceolate, 3–9.5 mm long, 0.8–1 mm broad, sericeous-ciliate; anthers narrowly oblong, 1.5–2 mm long, glabrous. Carpels ca. 25; ovaries subglobose, ca. 0.5 mm in dian., apex vil-

lous; styles slender, 7–9 mm long, densely and long white-sericeous.

甘肃(Gansu):迭部县,姜也沟(Diebu Xian, Jianguyegou) alt. 2500 m,坡地(on slopes),草本,花黄色带绿(herbs, fls. yellow tinged with greenish), 1999-06-02,白龙江调查队(Bailongjiang Exped.) 1691(holotype, PE).

本种的退化雄蕊呈条形,具1条脉,顶端常具不育花药,因而与也具上述特征、产北美州的 *Clematis columbiana*(Nutt.) Torrey & Gray 相近缘,与后者的区别在于本种为半灌木状藤本植物,枝草质,叶为三出复叶,萼片黄色带绿色。在 *C. co-*

lumbiana 为木质藤本, 叶为二回三出复叶, 萼片紫罗兰蓝色^[3]。

本种的萼片呈黄色, 与也具黄色萼片的西伯利亚铁线莲 *C. alpina* (L.) Mill. ssp. *sibirica* (Mill.) Kuntze 有些相似, 与后者的区别在于本种为半灌木状藤本, 枝草质, 叶为三出复叶, 小叶较小, 长 1 ~ 2.2 cm, 顶端急尖, 退化雄蕊呈条形, 顶端常有小的不育花药。在西伯利亚铁线莲, 为木质藤本, 叶为二回三出复叶, 小叶较大, 长 3 ~ 6 cm, 顶端渐尖或长渐尖, 退化雄蕊呈匙形, 无不育花药^[1, 3]。

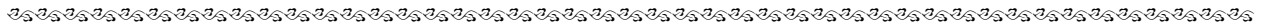
1912 年, 一个产于甘肃省天祝县的铁线莲属变种 *Clematis sibirica* (L.) Mill. var. *tianzhuensis* M. S. Yan & K. Sun 发表了^[2], 2009 年, 此变种被归并于 *C. alpina* (L.) Mill. ssp. *sibirica* (Mill.) Kuntze^[3]。本文作者未见过此变种的标本, 只见到其原始文献中的一幅墨线图, 了解到其叶为三出复叶, 小叶(2 ~) 3 深裂或 3 全裂, 萼片长卵形, 退化雄蕊近条形, 据此认为此变种与 *C. alpina* (L.)

ssp. *sibirica* (Mill.) Kuntze 不同, 而与本文新种很相似。但二者间存在一些区别, 此变种小叶的深裂片或全裂片顶端多为渐尖, 雄蕊花丝狭条状披针形, 在顶端近丝形, 退化雄蕊下部向基部渐变狭, 而与本文新种相区别。根据这些区别特征, 似可将此变种改为本文新种的变种, 但此问题需经研究过其标本之后才可能解决。

致谢 深切感谢孙英宝先生为本文绘图。

参 考 文 献

1. 方明渊. 中国植物志: 第 28 卷 [M]. 北京: 科学出版社, 1980 28: 133 - 139.
2. 晏民生, 孙坤. 甘肃产芍药属及铁线莲属植物新分类群 [J]. 植物研究, 1992, 12(4): 325 - 329.
3. Yang W J, Li L Q, Xie L. A revision of *Clematis* sect. *Atragene* (Ranunculaceae) [J]. Journal of Systematics and Evolution 2009, 47(6): 552 - 580.



《巢湖铁线莲, 安徽毛茛科一新种》果实补充描述

“巢湖铁线莲, 安徽毛茛科一新种” [2014, 34(3): 289 - 291] 一文果实补充描述如下: 果实易脱落。瘦果干时灰绿色, 卵圆形, 扁平, 长 3 ~ 5 mm, 宽 2 ~ 3 mm, 边缘增厚, 背缝线及腹缝线下凹形成浅纵沟, 果实密被短柔毛; 宿存花柱长达 4 cm, 被开展的白色柔毛, 长 1 ~ 2 mm。

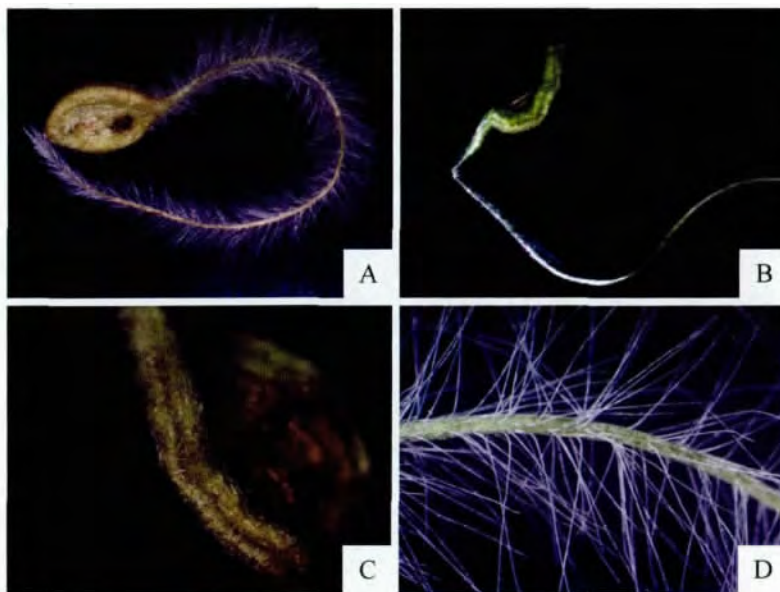


图 2 巢湖铁线莲瘦果 A. 瘦果及其宿存花柱(平面观); B. 瘦果及其宿存花柱(侧面观); C. 宿存花柱; D. 瘦果(侧面观)
Fig. 2 The achene of *Clematis chaohuensis* W. T. Wang & L. Q. Huang A. Achene and persistent style(front view); B. Achene and persistent style(lateral view); C. Persistent style; D. Achene(lateral view)